



Texas Child-Centered Care (T3C) System

Presentation to the Children's Commission

May 9, 2025

Presented by The Texas Department of Family & Protective Services



Texas Child-Centered Care?

Texas Child-Centered Care (T3C), formerly known as Rate Modernization, represents a ***complete*** transformation of the foster care system.

T3C replaces the 40-year-old rate structure with the following:

- Foster Care placements informed by an individual assessment
- Clearly defined service packages designed to meet the individual needs of children in care.
- Rate methodology that aligns the cost of care to quality foster care services.
- Continuous quality assurance and improvement structure.



The Path To T3C

86th Regular Session (2019)

- General Appropriations Act (GAA), Special Provision 32 required HHSC, in consultation with DFPS, to evaluate the existing foster care rate methodology.

87th Regular Session (2021)

- The GAA, Special Provision 26, directed DFPS, with the assistance of HHSC, to develop an alternative reimbursement methodology for foster care and CBC rates, including aligning rates to clearly defined program models.

88th Regular Session (2023)

- The GAA included funding directed to the implementation of, and new rates paid under the T3C System.

January 2025

- Providers transition to T3C begin serving children.

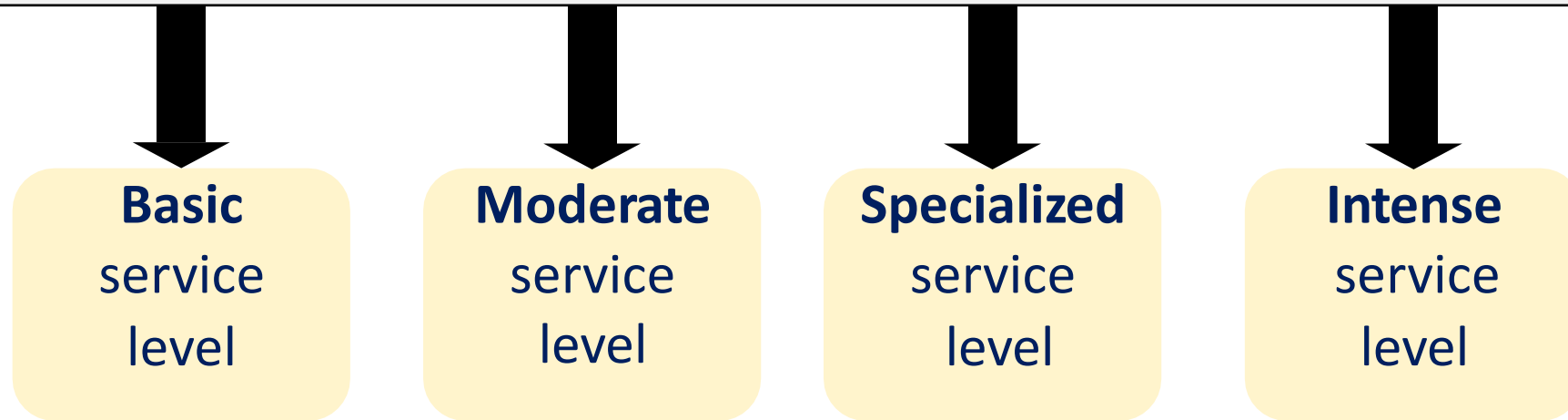
September 2027

- ***All*** providers must be transitioned to T3C.



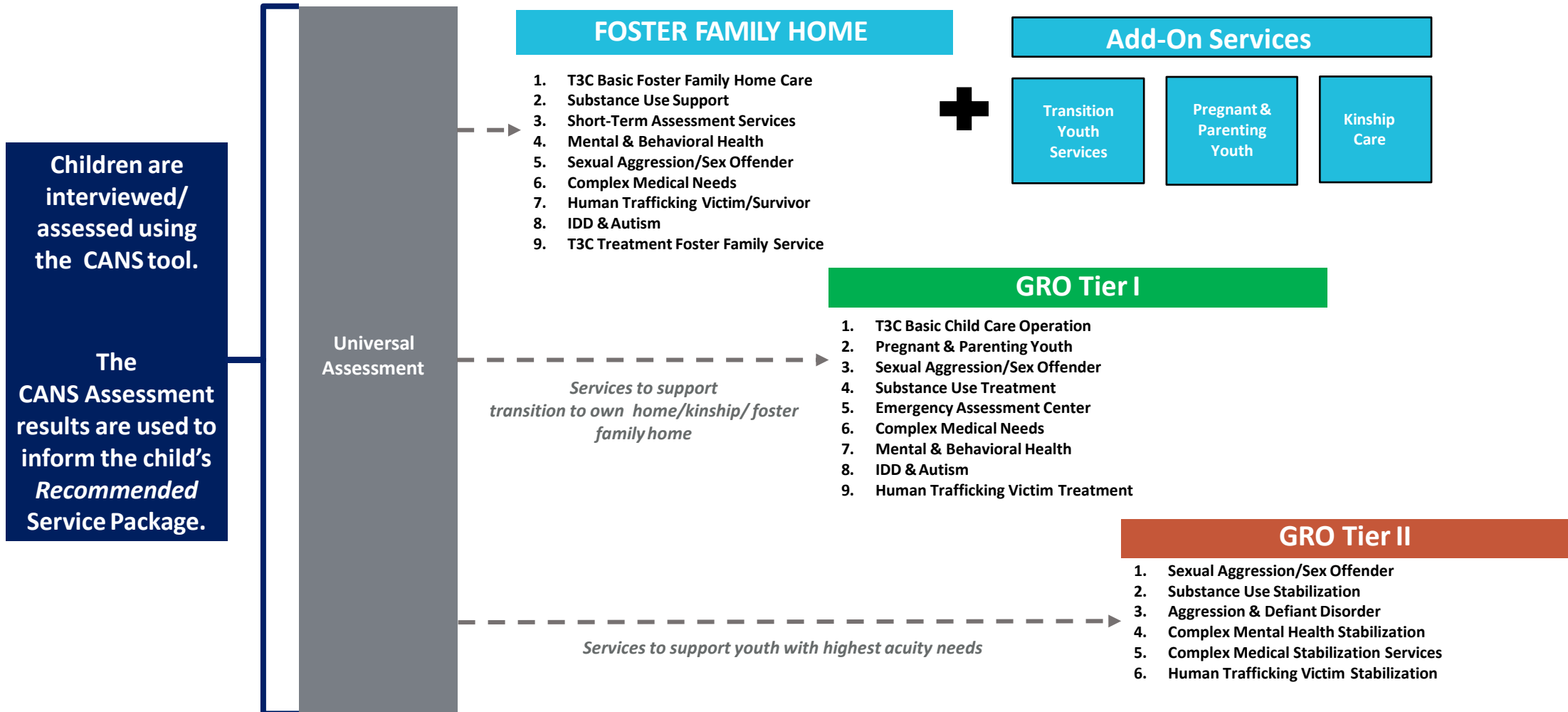
The Current System

Children are assigned one of four service levels based on a review of documentation, largely focused on behaviors, and are placed accordingly.





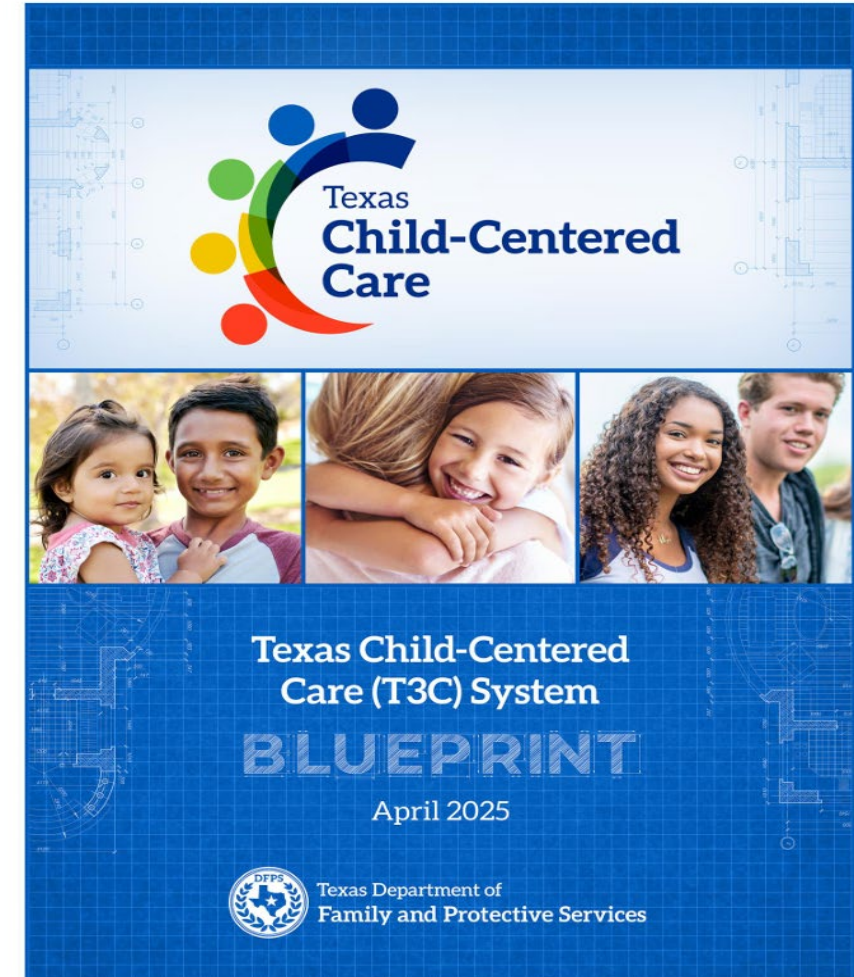
The *New* T3C System





T3C System Blueprint

- The *T3C System Blueprint* is a technical guide for Texas foster care stakeholders to gain an understanding of the framework, requirements, and parameters inherent in each of the 24 Service Packages and Add-On Services, and to keep up to date on transition and implementation activities.
- Updates to the *Blueprint* are released quarterly. To access a copy please visit:
https://www.dfps.texas.gov/Texas_Child_Centered_Care/documents/t3c_blueprint.pdf





Reviewing a Service Package

T3C System service descriptions are shown in the charts below based on the following listing of requirements:

Service Package Name

Service Package Setting

Service Package Permit Type

Service Package Permit Services

Service Package Description

Service Package Expectations

Service Package Anticipated Length of Stay

Service Package Staffing Requirements

Service Package Generally Appropriate Staff to Child Ratio

Service Package Hours of Operation

Service Package Desired Individual Outcome

Service Package Admission Guidelines

Service Package Quality Assurance & Continued Stay Guidelines

Aftercare Services

Page 74 of 491

T3C System Blueprint – January 2025

Service Package Name	Mental & Behavioral Health Support Services		
Setting	Foster Family Home		
Permit Type	Child Placing Agency		
Permit Services	<u>Treatment Services</u> Emotional Disorders	<u>Programmatic Services</u> Respite Child Care	<u>Special Services</u> Young Adult Care (If Child Placing Agency and Foster Family Home provides Extended Foster Care services)
Service Package Description	<p>A trauma-informed foster home that in addition to providing a child's basic living needs, including food, clothing, shelter, education, vocation, transportation, recreation, and extracurricular needs, has enhanced training and skill in providing and coordinating services to children, youth, and young adults that may present with or are pending a DSM-5 diagnosis for an emotional, conduct, or behavioral disorder(s) and for whom routine clinical intervention (therapy, education, and/or medication) is needed to support and manage day-to-day activities.</p> <p>The Mental & Behavioral Health Support Services Package is designed to offer community-based care and treatment/recovery services for children, youth, and young adults based on their individual strengths and needs, and in accordance with their customized Service Plan and permanency goal.</p>		
Service Package Expectations	<p>In addition to, and/or consistent with Statutory and Minimum Standards Requirements:</p> <ul style="list-style-type: none">Child Placing Agency must ensure that child receives regular and frequent individual, family, and group therapy (dependent on eligibility, therapy services should be authorized and paid for through STAR Health). The Service Planning team and Licensed		



BLUEPRINT



CANS Assessment Texas Version 3.0

The Child and Adolescent Needs and Strengths (CANS) Assessment is:

- An evidence-based, trauma-informed, multi-purpose tool that is used to gather and organize information to prioritize and align the child's needs with corresponding services and assess progress.
- Not a discovery tool, but rather an assessment that organizes the child's story using multiple sources to leverage the strengths of the child and identify their needs.

The CANS Assessment Texas Version 3.0 includes:

- Two new modules focused on gathering information about a child's Medical and Exploitation needs.
- A Decision Support Model that aligns child need to the *Recommended* T3C Service Package.

Universal Assessment Process & Practice Changes:

- Over time, T3C changes who is responsible for administering the CANS assessment transitioning the responsibility from STAR Health to the child welfare system.
- Aligns service planning across multiple provider and CPS/SSCC systems.
- The CANS 3.0 continues to be entered into eCANS and populate the Health Passport.



CANS Assessment Texas Version 3.0 Resources

- New CANS 3.0 Assessment Page, can be accessed by visiting: [DFPS - CANS 3.0 Assessment](#)
- There are some YouTube Videos:
 - ✓ Explaining the CANS to Young Children
 - ✓ Explaining the CANS to Youth
 - ✓ Explaining the CANS to Young Adults
 - ✓ Explaining the CANS to Caregivers (English and Spanish)
- The CANS 3.0 includes a new summary chart that allows comparison between the current and prior versions of an individual child's assessment to determine progress between assessments.
- On-line training produced by University of Kentucky to help caseworkers, Judges, caregivers, and others on how to read the CANS 3.0, eCANS report:
https://www.dfps.texas.gov/Texas_Child_Centered_Care/how-to-read-ecans-report/index.html



Credentialing

- For purposes of T3C, becoming “Credentialled” means the 24-hour residential childcare provider has demonstrated eligibility, in accordance with established requirements to provide a particular Service Package, and for CPA’s a particular Add-On Service
- A 24-hour residential childcare provider will “apply” to become Credentialled for one or more Service Packages using a centralized-DFPS hosted process
- A provider who is denied for a Service Package and/or Add-On Services would be provided Technical Assistance and can reapply
- Once “Credentialled” the 24-hour residential childcare provider can subcontract with an SSCC and/or DFPS (legacy) to provide the distinct Service Package(s) and/or Add-On Service(s)
- New Credentialing Division is structured under DFPS Purchased Client Services



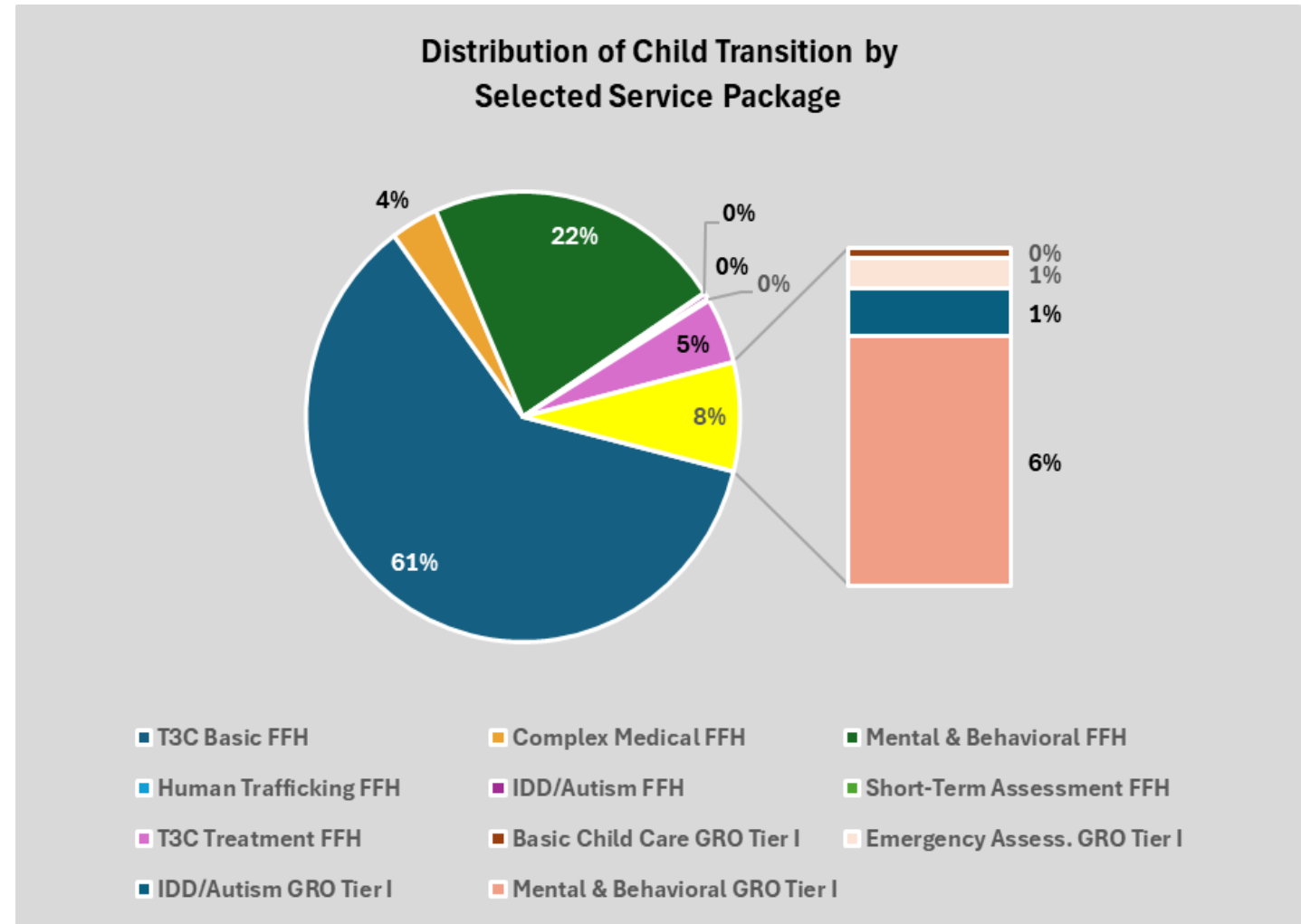
Implementation Status

- **December 2024-** The provider credentialing process went-live, and providers started applying to provide T3C Services.
- **February 2025-** The first GRO and CPA were awarded active credentials.
- **March 2025-** The first children began receiving T3C services.
- **As of May 8th:**
 - More than 110 provider applications to become credentialed for T3C services have been submitted to DFPS.
 - 19 providers currently have **active** credentials to provide T3C services.
 - 14% of the children in paid foster care are currently receiving a T3C service package.
 - 26 providers are in have **inactive** credentials to provide T3C services.
- To find list of the T3C Service Providers in your area please visit:
https://www.dfps.texas.gov/Texas_Child_Centered_Care/credentialed_providers.asp.



Implementation Status

- As of May 1st, the chart shows the distribution of child transition by Service Package.
- About 92% of the children that have transitioned are in Foster Family Home Service Packages.





Thank You

- We would love to hear from you! Please email any questions, comments, or feedback about the T3C System or this presentation to dfpstexaschildcenteredcare@dfps.texas.gov.
- If you have not already done so, please make sure to subscribe for news and updates on T3C on the DFPS webpage by registering your email address

The screenshot shows the DFPS website header with the Texas Department of Family and Protective Services logo and name. Below this is a blue banner for 'Texas Child-Centered Care (T3C)'. A breadcrumb trail reads 'DFPS Home > Texas Child Centered Care > This Page'. On the left is a sidebar with the T3C logo and a 'GENERAL INFORMATION' section with a link to 'What's New'. The main content area has an 'Overview' section titled 'What is Texas Child-Centered Care?' with a paragraph describing the system. On the right, there is a yellow 'SUBSCRIBE' button with an envelope icon. Below it is a sign-up form for 'Texas Child-Centered Care News' with an 'email address required' input field and a 'Submit' button. A red arrow points from the text 'registering your email address' in the list above to the 'SUBSCRIBE' button.